

Grant Writing Resources: Finding a Funder

❖ Grant Search Resources

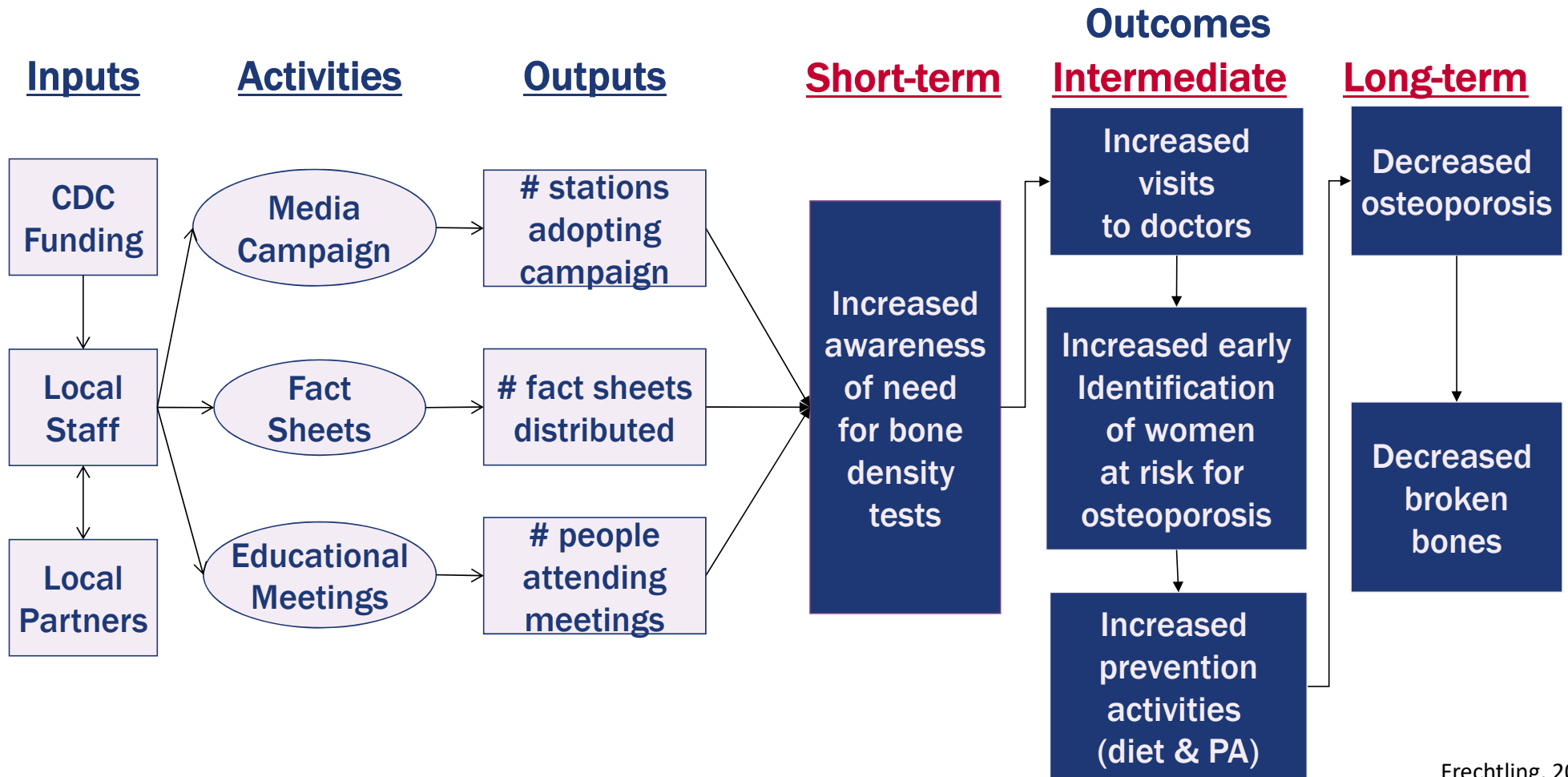
- Candid: <https://candid.org/>
 - Free account: https://shop.candid.org/ccrz_CCSiteLogin?cclcl=en_US
- Grant Station: <https://grantstation.com/>
- Non-profit Guides: <http://www.npguides.org/>
- Guide Star: www.guidestar.org
- Foundations: www.foundations.org

❖ Government Resources

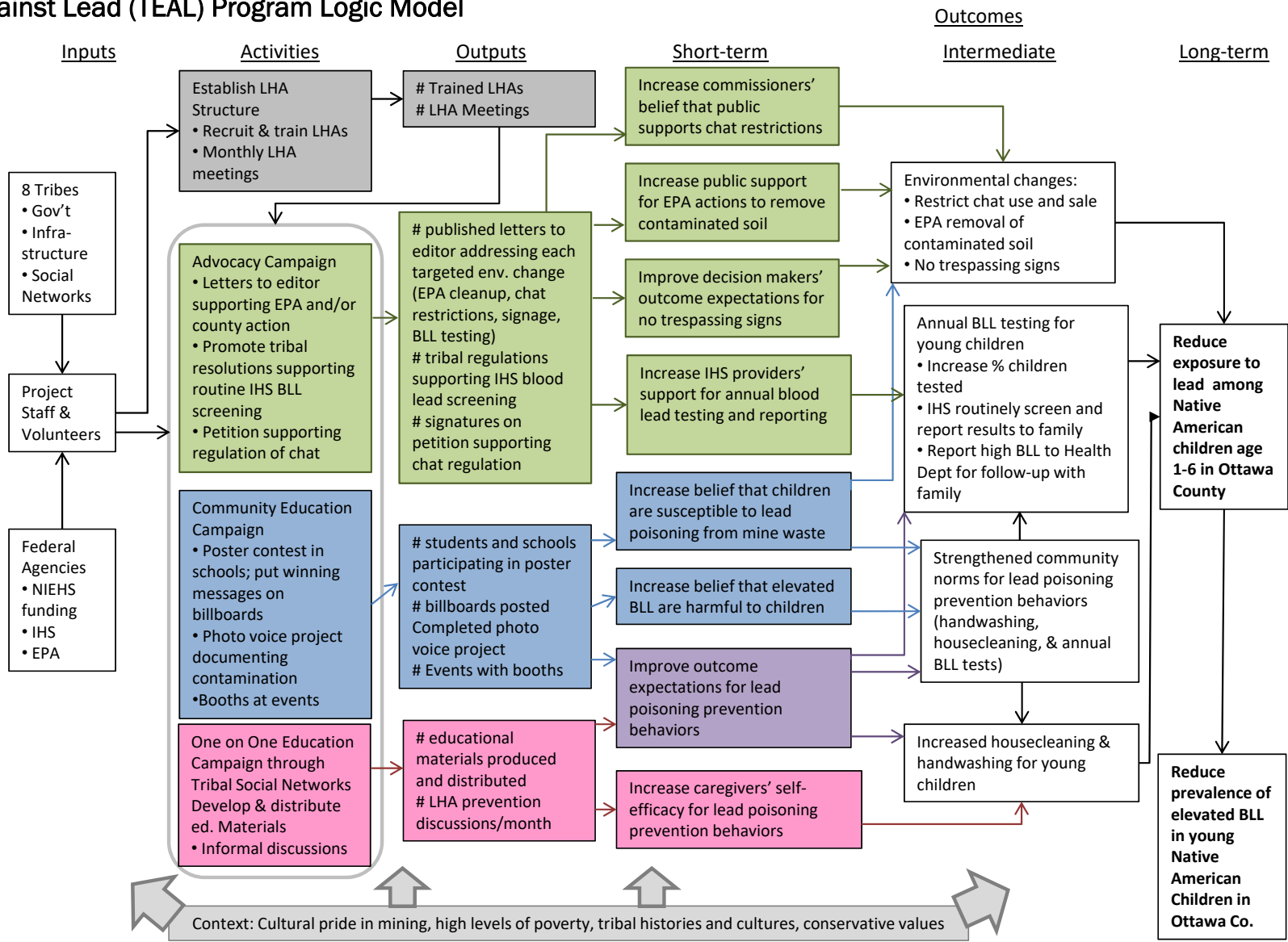
- All Government Grants: <http://www.grants.gov>
- Department of Health and Human Services (DHSS):
<http://dhhs.gov>
- Centers for Disease Control and Prevention (CDC):
<http://www.cdc.gov>
- Substance Abuse and Mental Health Services Administration (SAMHA): <http://www.samhsa.gov>

Logic Model Examples

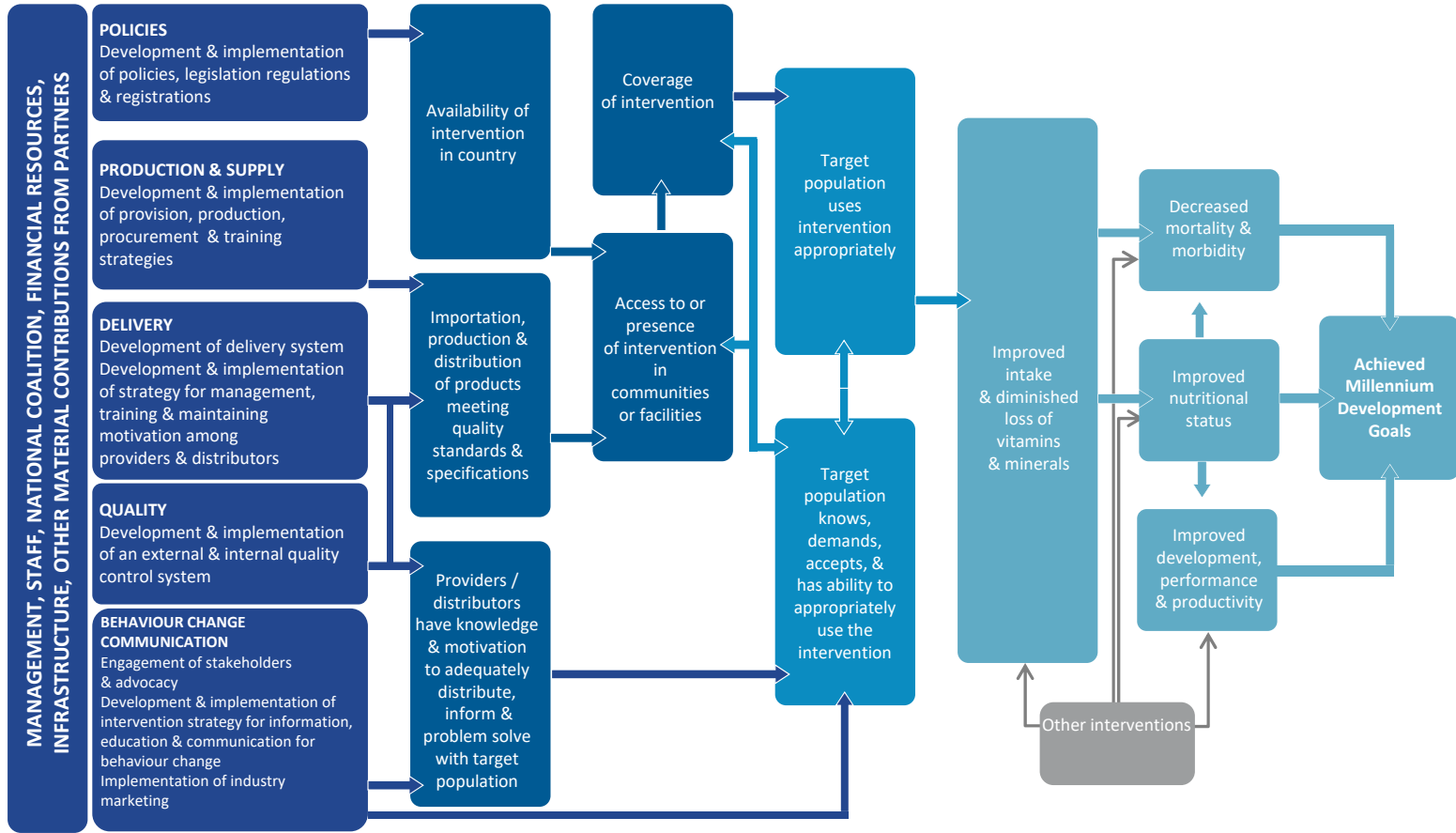
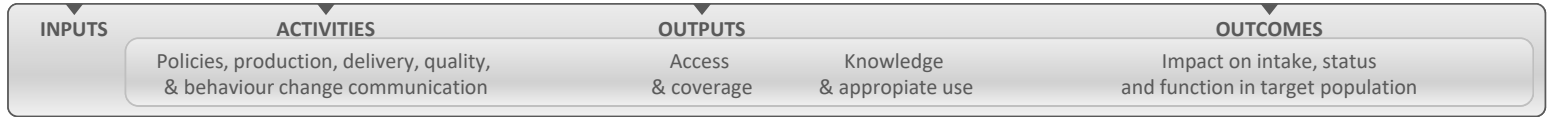
Osteoporosis Prevention Campaign



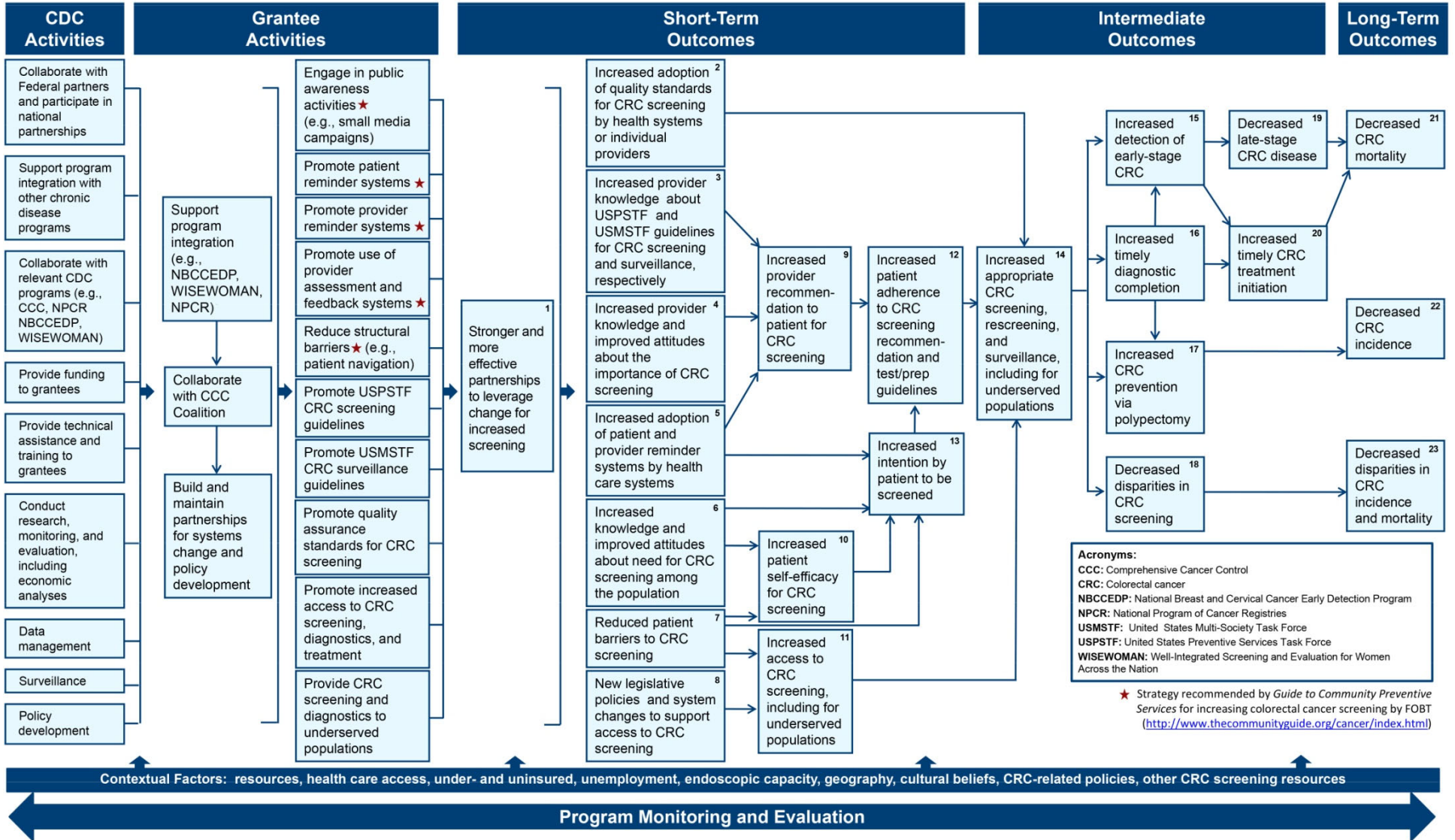
Tribal Efforts Against Lead (TEAL) Program Logic Model



WHO/CDC Logic Model for Micronutrient Interventions in Public Health



CDC's Colorectal Cancer Control Program: Logic Model

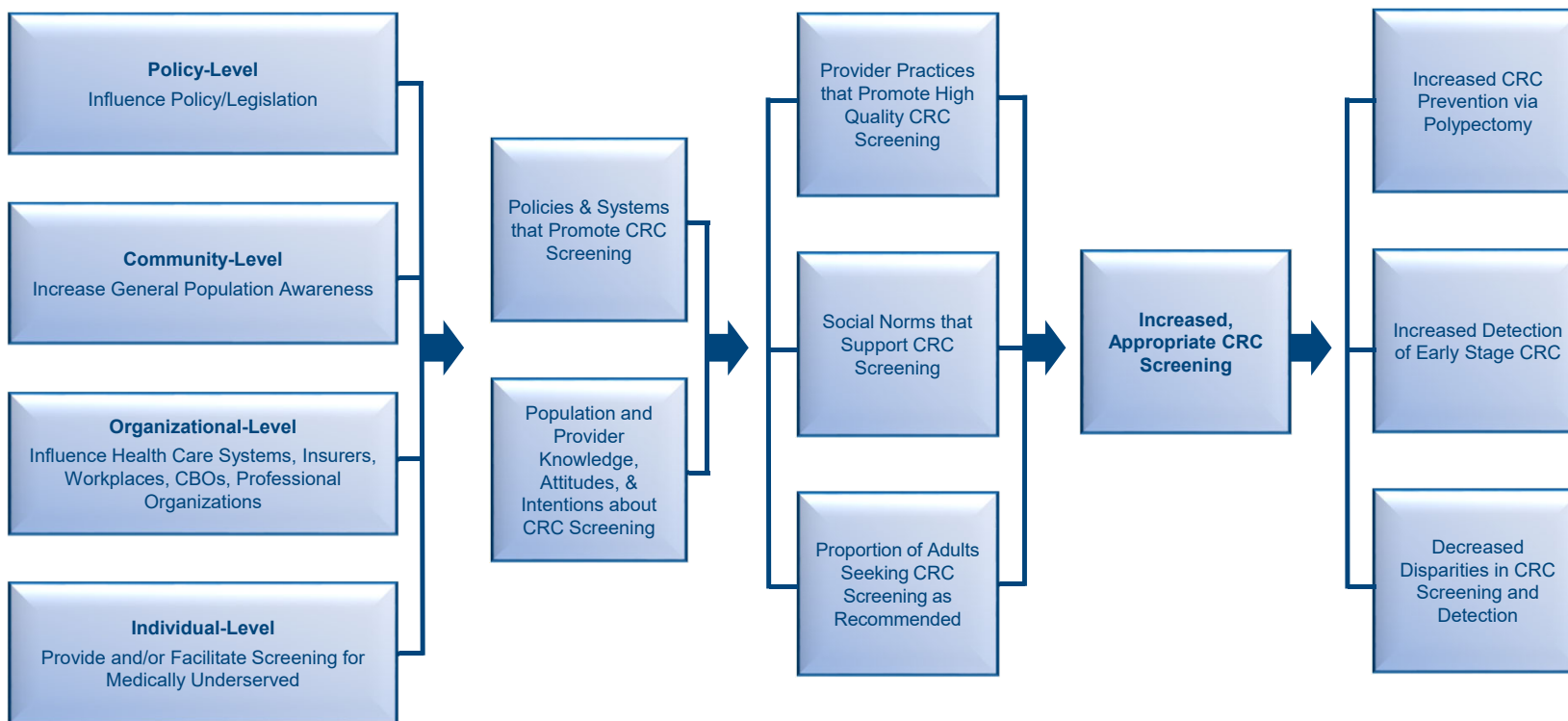


CDC's Colorectal Cancer Control Program: Simplified Logic Model

State and Tribal Grantees, in Collaboration with CCC Coalitions and Other Partners, Conduct These Activities...

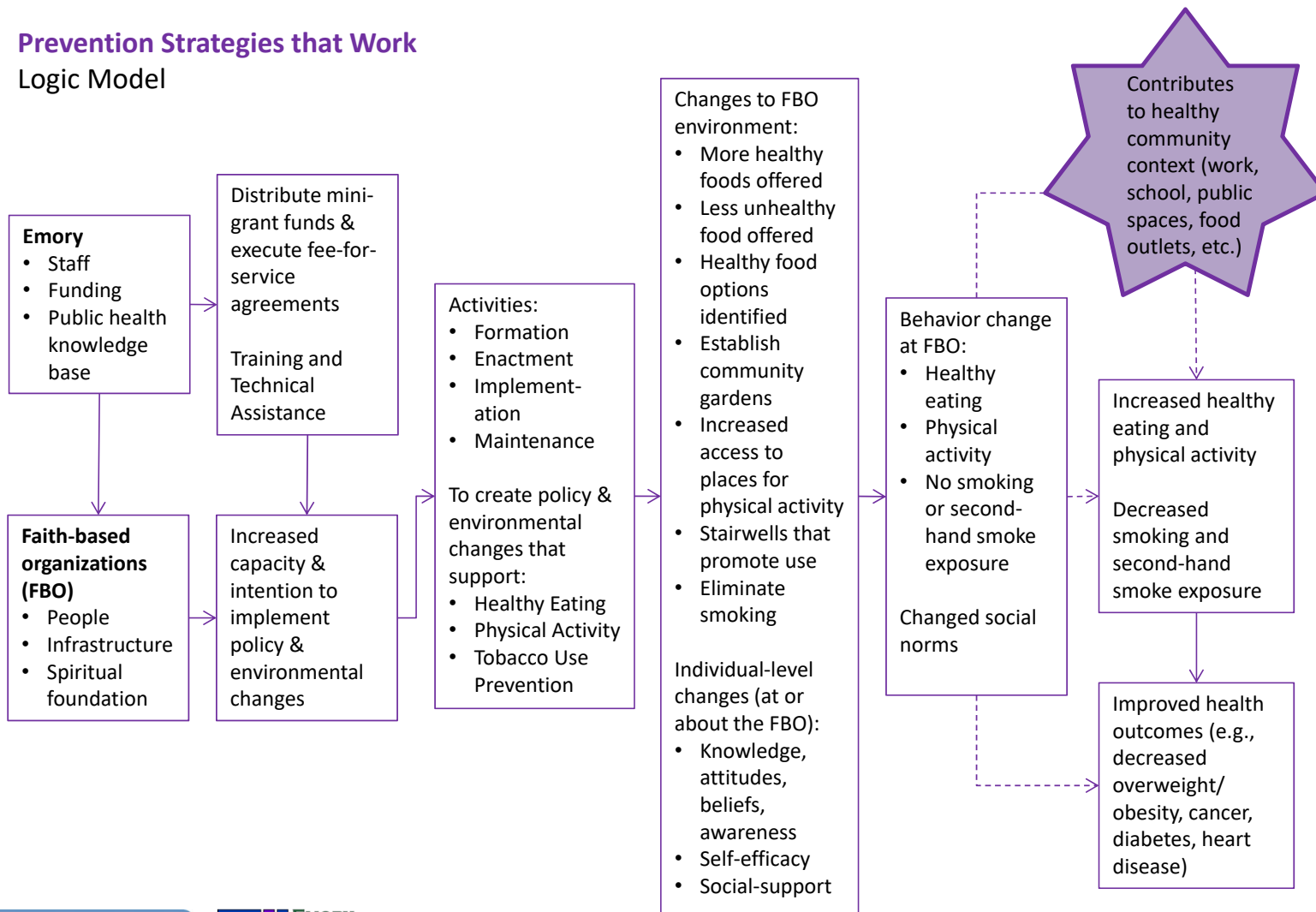
To Create These Changes that Improve or Increase...

In Order to Achieve Population-Level Program Outcomes



Program Monitoring and Evaluation

Prevention Strategies that Work Logic Model



Evaluation Plan Template

Objective:							
Evaluation Questions	Indicators	Data Sources	Data Collection	Timeframe	Data Analysis	Communication Plan	Staff Responsible
What do you want to know?	What type of data will you need?	Where will you get the data?	How will you get the data?	When will you collect the data?	What will you do with the data?	When and how will you share the results?	Who will ensure that this gets done?
Objective:							

